

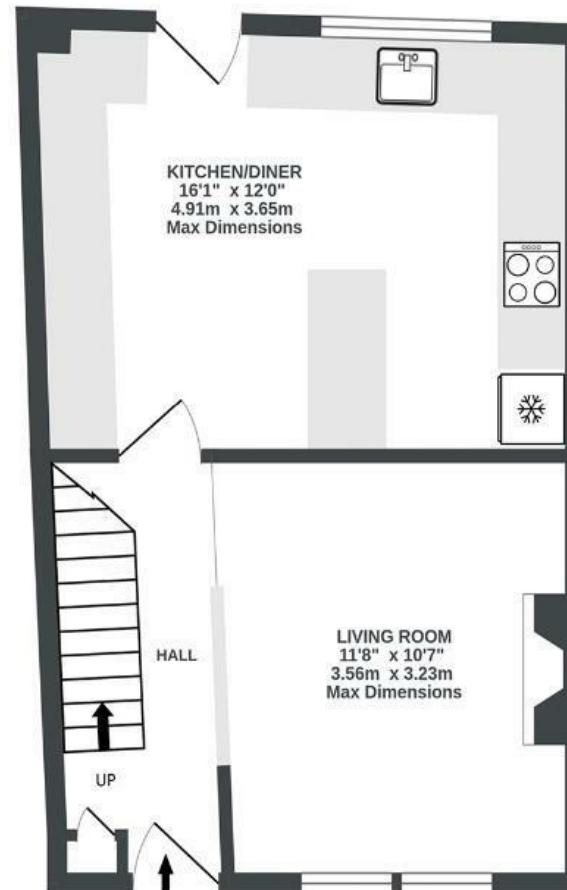
Chalks Road

WHITEHALL

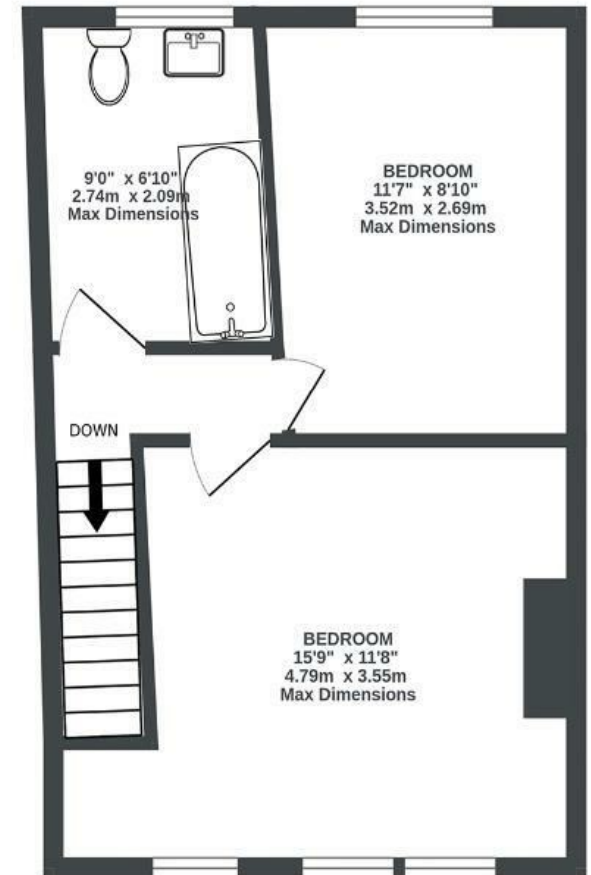
APPROXIMATE FLOOR AREA
66 SQM / 711 SQFT



GROUND FLOOR
356 sq.ft. (33.1 sq.m.) approx.



1ST FLOOR
354 sq.ft. (32.9 sq.m.) approx.



Illustrations are for reference purposes only, measurements are approximate, not to scale.

Boardwalk

Chalks Road

WHITEHALL, BRISTOL

£

£335,000



BS5 9EP

zzz

2 Bedrooms



1 Bathrooms

"Our family love to hang out in our kitchen diner which is cosy in the winter with underfloor heating, and sunny in the summer with the door leading straight out to our spacious garden. We've put a lot of care into creating the perfect cosy base in which to explore all that St George has to offer. Having such a great park just a street away is such a perk - our son has spent hours perfecting his cycling in the skatepark and we've fed the birds in the lake more times than we can count."

